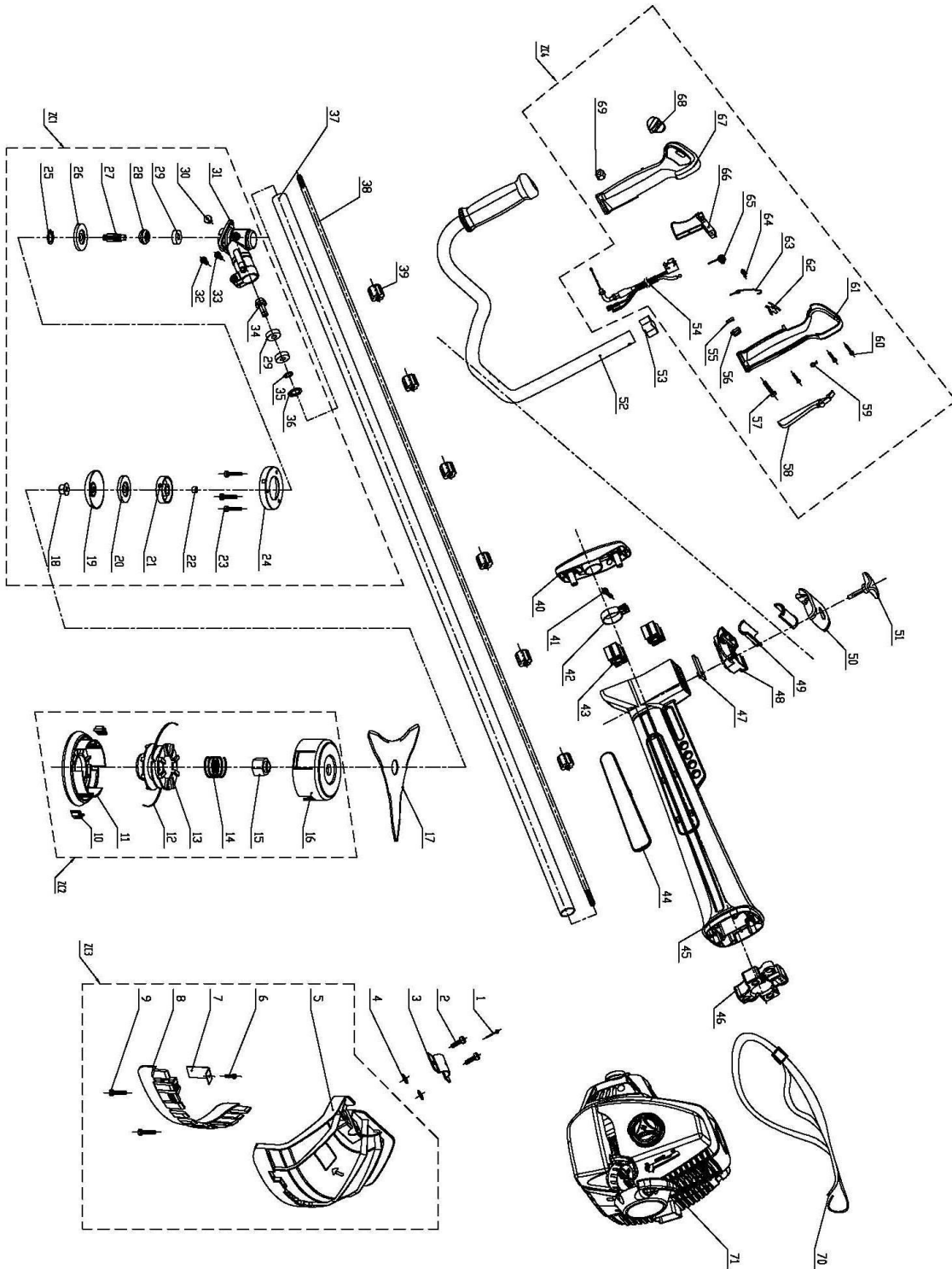


Spare parts list for RPB 430 PRO engine			
Pos no	Reference	English name	QTY
1	YD4500-90023	Screw M5X14 Gb/T 70.1	5
2	GC305.5-44325	Cover Pa6-Gf30	1
3	YD6200-97003	Screw M5X14 Gb/T 9074	3
4	GC305.5-18300	Oil Tank	1
5	GC305-18034	Fuel Filter	1
6	GC305.5-18109	Pipe Clip	1
7	GC305-18104	Fuel Tube Socket	1
8	GC305-18101.2	Outlet Tube	1
9	GC305-18101.1	Inlet Tube	1
10	GC305.3-18031	Hang	1
11	GC305-18208	Support Hang	1
12	GC305-18033	Gasket	1
13	GC305-17133	Support Connector	1
14	GC305-17402	Connector Oil Out	1
15	GC305-18209	Fuel Filter Vert	1
16	GC305.3A-18032	Fuel Cap Pa6-Gf10	1
17	GC415-18302	Rubbet Sleeve	1
18	GC415.5-18303	Support Oil Tank	1
19	GC415.5-18213	Support Oil Tank	1
20	GC415.5-91331	Screw St3.9X14 Gb/T 818-2000	8
21	YD6200-97004	Screw M5X20 Gb/T 9074	12
22	GC305.5-25110	Start Housing Pa6-Gf30	1
23	GC305.3A-25212	Spring	1
24	GC305.3A-25211	Pully Starter	1
25	GC305.3A-25112	Spring	1
26	GC305.3A-25215	Pully Starter (Small)	1
27	GC305.3-25288	Screw	1
28	GC305.3A-25302	Starter Rope Cover	1
29	YD2500-25318	Gasket	1
30	GC305.3A-25301	Starter Rope	1
31	GC305.3A-25311	Starter Handle	1
32	GC305-25260.2	Pully Assy	1
33	YD3800-95012	Seal lol Fb12X22	1
34	GC415.3-13201	Crankcase Left	1
35	GC415-13090	Gasket	1
36	YD2500-96011	Oil Bearing	1
37	GC415-14110	Crankshaft	1
38	GC415-94602	Key Flywheel 3X13 Gb/T 1099	1
39	YD2500-96013	Oil Bearing 6202 P5	1
40	YD6200-94031	Pin $\Phi$ 5X10 Gb/T 119.1-2000	1
41	YD6200-94031	Crankcase Right	1
42	YD3600-94033	Pin $\Phi$ 4X10 Gb/T 119.1-2000	1
43	GC415-95013	Seal Oil Fb15X30 Gb/T 276	1
44	LJ230B-97007	Screw M5X30 Gb/T 9074	4
45	GC415-15110	Flywheel	1

46	YD2500-92102	Screw M8 Gb/T 6177.1	1
47	GC305-22132	Spring	1
48	GC305-93004	Gasket $\Phi 8 \times \Phi 22 \times 1$ Gb/T 97.1-2000	2
49	GC305-22112	Clutch	2
50	GC305-93402	Gasket Gb/T 95-1987	2
51	GC305-22133	Screw	2
52	GC305-22121	Drum-Clutch	1
53	GC305-93215	Ring $\Phi 35$ Gb/T 893.1-1986	1
54	GC305-96019	Oil Bearing	1
55	GC305-93217	Ring $\Phi 15$ Gb/T 894.1-1986	1
56	GC415.5-44324	Outlet Bloke	1
57	GC415-14002	Ring-Snap	1
58	GC415-14001	Pin-Piston	1
59	GC415-96119	Bearing Ball K9X12X12 Jb 2581	1
60	GC415-14211	Piston	1
61	GC415-14311	Ring-Piston	2
62	GC415-12501	Gasket	1
63	GC415.5-12111	Cylinder	1
64	GC305-26200	Spark-Plug	1
65	GC415.5-15717	Wind Guide Cover	1
66	GC415.5-16314	Gasket	1
67	GC415-21110	Muffler	1
68	YD6200-97003	Screw M5X14	1
69	GC415.5-21113	Muffler Protector	1
70	YD3800-90024	Screw M5X20 Gb/T 70.1	1
71	GC415.5-11301	Cover Cylinder	1
72	GC415.5-91319	Screw St2.9X14	2
73	GC415-16001	Gasket	1
74	GC415-16111	Boot-Intake	1
75	GC415-18204	Gasket	1
76	GC305-18200	Carburetor	1
77	GC305.5-16211	Air-Filter	1
78	GC415.3A-16212	Inbuild Air-Filter	2
79	GC305.5-24006	Choke-Knob	1
80	GC305-24008	Choke Lever Set	1
81	GC305.5-16312	Plate Chobe	1
82	GC305.5-16313	Filter	1
83	YD4500-90029	Screw M5X50 Gb/T 70.1	1
84	GC415.5-16301	Cover Air Filter	1
85	GC305.5-16308	Knob Air Filter	1
86	GC305-26151	Wire-Switch	1
87	GC415.5-26110	Ignition Assy	1
88	LJ230B-97006	Screw	2
ZC1	GC305.5-25000	Starter Assy	1
ZC2	GC305.5-18300	Oil Tank Assy	1



Spare parts list for RPB 430 PRO transmission			
Pos no	Reference no	English name	QTY
1	GC305.3A-98101	Screw 5X10 Gb/T 12618-1990	1
2	GC305-90012	Screw M6X20 Gb/T 70.1	2
3	GC305.3A-48050	Plate	1
4	GC305-98201	Gasket	2
5	GC305.3A-48054	Grass Cover	1
6	YD2500-91311	Screw	1
7	GC305.3A-48056.2A	Small Blade	1
8	GC305.3A-48060	Hang Plate Grass Cover	1
9	GC305.3A-48061	Screw St4.2X32	2
10	GC305-48237	Jacket Nylon Cutter	2
11	GC305-48238	Support Nylon Cutter	1
12	GC305-48185	Line	1
13	GC305-48236	Line Plate	1
14	GC305-48235	Pspring	1
15	GC305-48233.2	Nylon Cutter Insert	1
16	GC305-48233	Cover Nylon Cutter	1
17	GC415-48200	Three Tooth Blade	1
18	GC305.1-92105	Screw	1
19	GC415-48048	Cover	1
20	GC415-48047	Plate	1
21	GC305.3A-48046	Holder	1
22	GC305-48049.1	Gasket	1
23	GC305.1-97303	Screw M5X10 Gb/T 9074.4-1988	3
24	GC305-48045	Cover	1
25	YD3800-93211	Ring $\Phi$ 32 Gb/T893.1-1986	1
26	GC305-96018	Oil Bearing 6002Z Gb/T 276-1994	1
27	GC305-48044	Axle	1
28	GC305-48043	Gear	1
29	GC305-96017	Ball Bearing 6200Rs Gb/T 276-1994	3
30	GC305-97304	Screw M8X10 Gb/T 9074.4-1988	1
31	GC305-48042	Gear Box	1
32	YD2500-90025	Screw M6X25 Gb/T 70.1	1
33	GC305-48031	Screw M5X12	1
34	GC305-48041	Gear	1
35	GC305-93216	Ring $\Phi$ 10 Gb/T894.1-86	1
36	GC305-93214	Ring $\Phi$ 26 Gb/T 893.1-1986	1
37	GC305-45123	Tube Shaft	1
38	GC305-45130	Drive Shaft	1
39	GC305-45300	Oil Bearing	6
40	GC305.5-45430	Connector	1
41	YD4500-90023	Screw M5X14 Gb/T 70.1	6
42	GC305.5-16311	Support Tube Shaft	1
43	GC305.5-45144	Damping	2
44	YD2500-96013	Cover Tube Shaft	1
45	GC305.5-45401	Long Tube Shaft	1

46	GC305.5-45143	Rubbet Sleeve	1
47	GC305.5-45420	Plate	1
48	GC305.5-43017	Plate	1
49	GC305.3A-43021	Support	2
50	GC305.3A-43016	Plate	1
51	GC305.5-43023	Knob-screw	1
52	GC305.3A-43030	Handle Asst	1
53	GC305-48116	Clip	1
54	GC305.5-47090	Ignition Assy	1
55	GC305.3A-47115	Plate	1
56	GC305.3A-47114	Support Wire	1
57	GC305-90305	Screw M5X30 Gb/T 818-1986	1
58	GC305.3A-47088	Trigger	1
59	GC305.3A-47086	Trigger	1
60	GC305.1-91327	Screw St3.9X16 Gb/T 845-1986	3
61	GC305.3A-47094	Handle Right Parts	1
62	GC305.3A-47083	Spring	1
63	GC305.3A-47112	Ring Snap	1
64	GC305.3A-47113	Screw	1
65	GC305.3A-47092	Spring	1
66	GC305.3A-47091	Trigger	1
67	GC305-47084	Handle Rinht Parts	1
68	GC305-47081	Wire Switch	1
69	YD2500-92001	Screw	1
70	GC305-46580	Harness Assy	1
71	GC415.5-42000	Engine Assy	1
ZC1	GC305.5-48180	Gear Box Assy	1
ZC2	GC305-48180	Nylon Cutter Assy	1
ZC3	GC305.5-48050	Cover Grass Assy	1
ZC4	GC305.5-47080	Handle Control Assy	1